



ADORN

ROBE CATALOGUE

We Design, We Customise, You install.

www.Adorn.World

WHY CHOOSE ADORN FOR YOUR ROBES?

FORMALDEHYDE FREE!

You've heard about the dangers of silica dust in reconstituted stone. At Adorn, our honeycomb aluminum color board offers revolutionary technology that makes it formaldehyde-free. Unlike products from Laminex or Polytec, our boards ensure no harmful chemicals are released into your home or the atmosphere.

UNMATCHED DURABILITY

Constructed from premium aluminum and innovative web technology color board, our joinery is engineered to withstand the test of time, offering you exceptional long-term value and peace of mind.

HYGIENE

Our sterile surfaces, combined with the extensive use of aluminum, are designed for easy maintenance. This makes cleaning a breeze, ensuring a healthy and hygienic living environment.

SUSTAINABLE

With a recycling rate of up to 35%, our aluminum furniture supports a more sustainable future, reducing waste and conserving resources.

CHOOSE US FOR STYLISH, SUSTAINABLE, AND SUPERIOR-QUALITY JOINERY THAT ENHANCE YOUR HOME AND WELL-BEING.

OUR PROCESS

First, provide us with precise room measurements and photos of your space. Our design team will then create detailed drawings and 3D renders for your review, allowing for any adjustments until you are completely satisfied. Once approved, we will manufacture your custom robes, flat pack them with appropriate protection, and deliver them to your doorstep, ready for DIY assembly or professional installation.



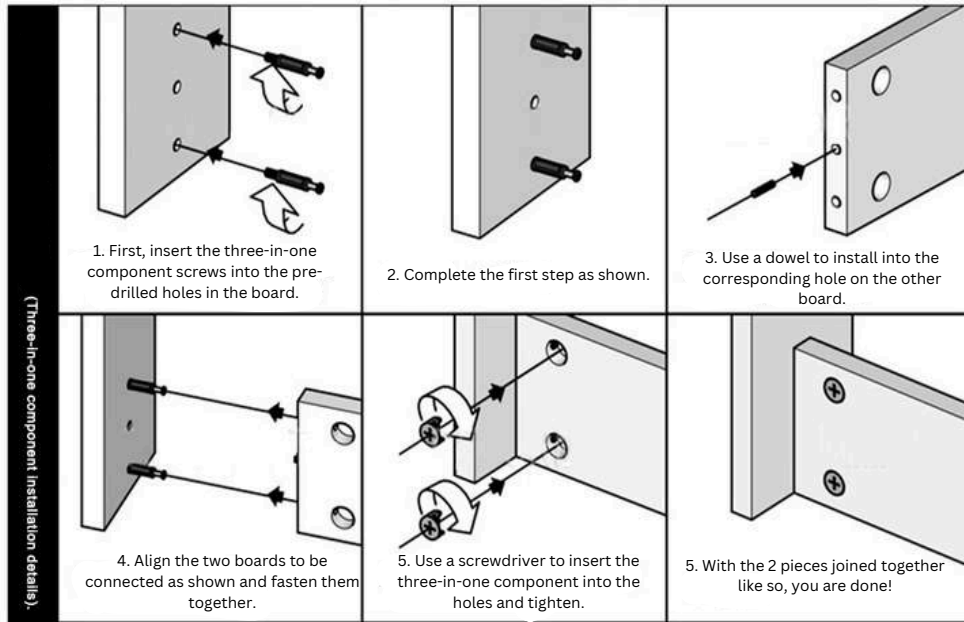


CUSTOM JOINERY

WE DESIGN
WE CUSTOMISE
YOU INSTALL



THE HOW AND WHY



STRONG AND DURABLE

3-series aluminum alloy

Yield strength:

Above 110Mpa

Tensile strength:

Above 205Mpa

Density

2. 75g/cm³



GREEN AND ENVIRONMENTAL PROTECTION

All-aluminum furniture products

can achieve "0 formaldehyde" emissions, safe and environmental protection.



FIVE DAILY PRECAUTIONS

Fireproof, waterproof, moisture-proof, mildew-proof, corrosion-proof, moth-proof.



ANTI-COLLISION AND ANTI-CHANGE

The characteristics of aluminum alloy can be perfectly reflected in all-aluminum furniture.

Coefficient of elasticity: 68. 9GPa



SEIKO QUICK LOADING

All-aluminum furniture adopts profile sliding connection mode, no exposed holes, smooth surface and strong appearance integrity.



SOUND INSULATION AND THERMAL INSULATION

The aluminum sheet is filled with high quality honeycomb aluminum foil, which has good sound insulation and heat insulation double resistance.



SURFACE DIVERSITY

There are a variety of surface treatment methods for all -aluminum furniture, including spraying, wood grain transfer, swimming, oxidation, fluorocarbon spraying.

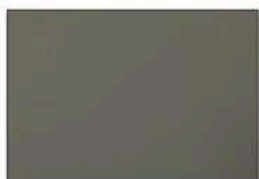


RECYCLING

If the elimination recovery rate of wooden furniture is basically zero, the aluminum of all -aluminum furniture can be recycled.



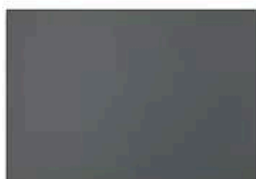
COLOUR WAYS



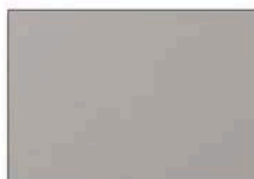
Honeycomb panels



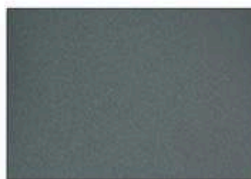
Deep bay grey skin feeling



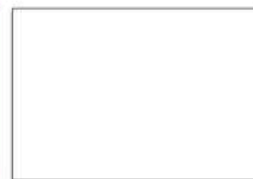
Polar gray skin feeling



A sense of khaki skin



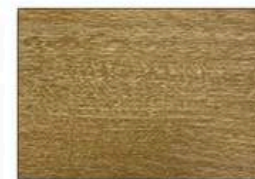
Pearlescent dark grey



Sandy white



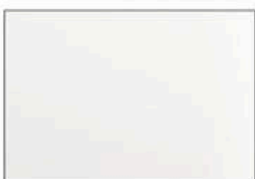
Sanded khaki



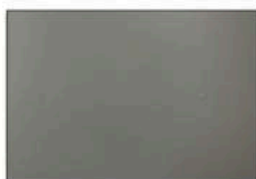
Feel too white wood



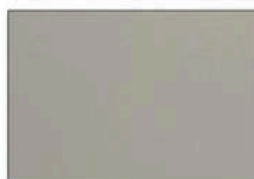
Green skin sensation



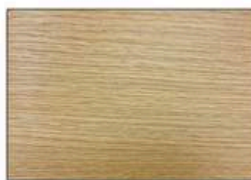
Milky skin feeling



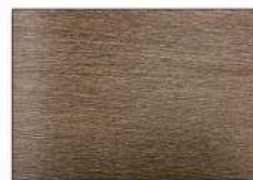
PET Mocha skin feeling



PET khaki skin feeling



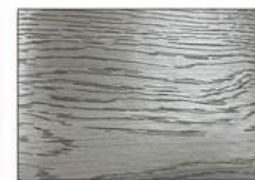
Feel camphor wood



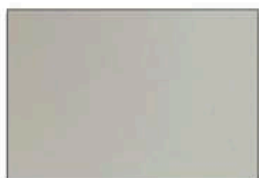
Feel yellow flower pear



Yellow oak



Daphne bush



PET Deep Bay grey



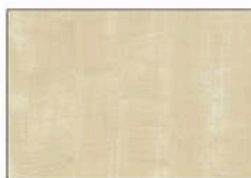
PET opalescent skin feeling



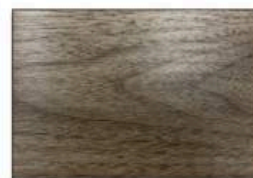
PET deep blue skin



Pearl grey



Sycamore



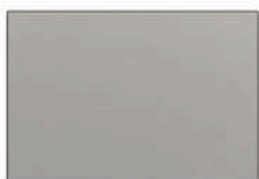
Gray oak



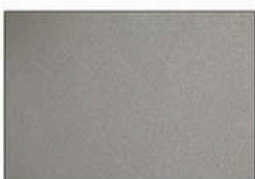
Bragg oak



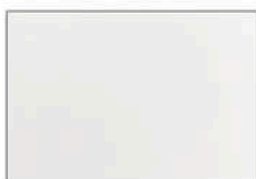
Pure xiangyu



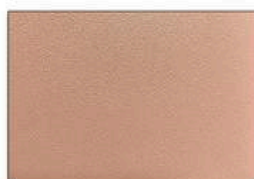
Pearl sea bay gray



Pearlescent khaki



Pearl white



Pearlescent pink



Alder ash



zebrawood



Zebra grey

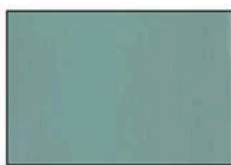


Hand-woven fabric pattern

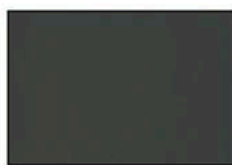
COLOUR WAYS



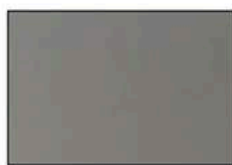
Bean paste green highlight



Blue sky highlights



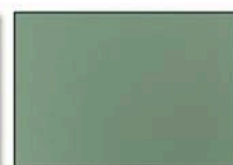
Mysterious gray highlights



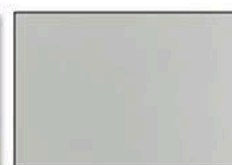
Cement ash highlights



Sky blue skin feeling



Bean paste green skin feeling



Crystal gray skin



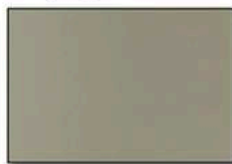
Fengxin gray skin feeling



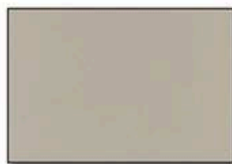
Cream white highlights



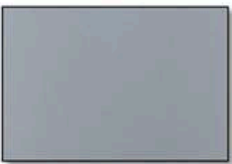
Moonlight white highlights



Deep khaki highlights



Milk tea grey highlights



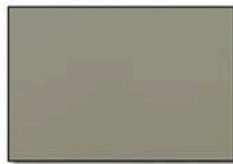
Light ink gray skin feeling



The lake feels green



Acacia grey skin feeling



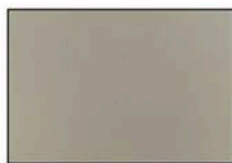
Shell gray skin feeling



Snowflake white skin feeling



Moonlight white skin feeling



Deep khaki



Cement gray skin feeling



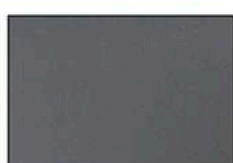
Snowflake white pearlescent skin



Milk tea grey pearl skin feeling



Cement ash pearl skin



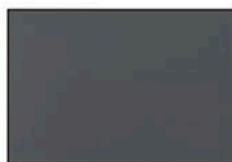
Mysterious grey pearlescent skin



Creamy white skin



Milk tea grey skin feeling



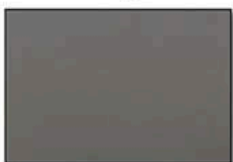
Mysterious gray skin sensation



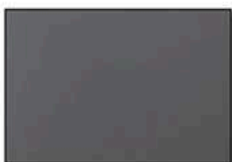
Girly pink skin



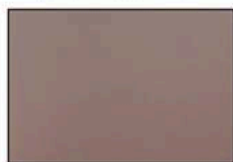
Silver clove matte



Amber gold matte



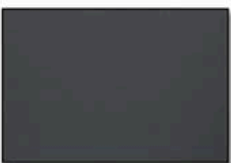
Stainless steel silver matte finish



Rose gold matte



Gold green matte finish



Black titanium matte

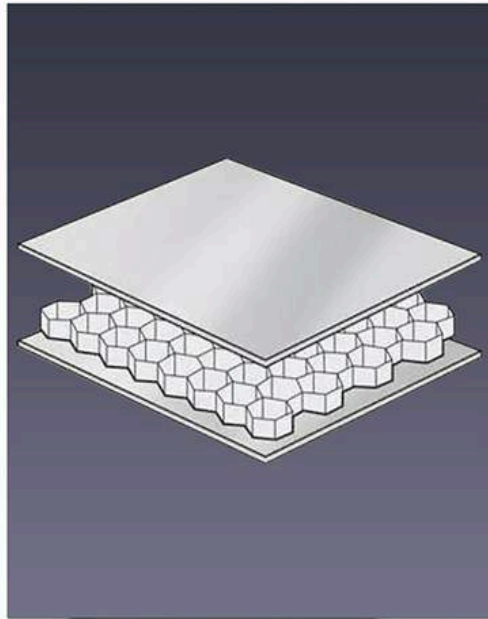


Snowflake white highlights



OUR DRAWER INSERTS

The Technology Behind our Cabinets



Honeycomb panel aluminum furniture panel

After the surface treatment of the honeycomb plate, the aluminum honeycomb plate in the middle of the two-layer aluminum plate adopts the composite honeycomb structure, and the middle layer adopts the standard aluminum honeycomb core. through the cold and hot pressing technology of the composite process, the aluminum honeycomb plate has many advantages, such as not easy to deform, mildew-proof, fire-proof, high-temperature resistance, cold resistance, rigidity and impact resistance, sound absorption, heat insulation, shock resistance and so on. Compared with real wood, there are no shortcomings such as moth, cracking, deformation, easy corrosion and so on. Aluminum honeycomb panels from panel material, shape, seams, installation system to color, surface treatment for architects to provide a wealth of choices, can show a rich roofing performance, with excellent design freedom. It is a new material with convenient construction, ideal comprehensive performance and remarkable thermal insulation effect, and its excellent performance has attracted people's attention.

Dominant potential

For the modern furniture industry with strict requirements for environmental protection, using aluminum honeycomb board to do furniture processing materials is a good material choice in the new century, its completely non-toxic green quality, so that furniture manufacturers in the processing of furniture, less unnecessary environmental protection procedures, in addition, aluminum honeycomb panel can be diversified such as solid wood, aluminum board, plasterboard, natural marble, can be made into honeycomb board, material selection is convenient. Aluminum honeycomb plate has many advantages, such as not easy to deform, mildew-proof, fireproof, high temperature resistance, cold resistance, strong rigidity and impact resistance, sound absorption, heat insulation, shock resistance and so on.



Surface treatment

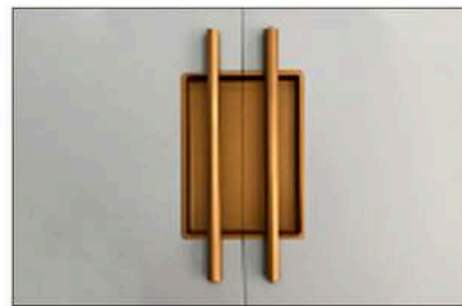
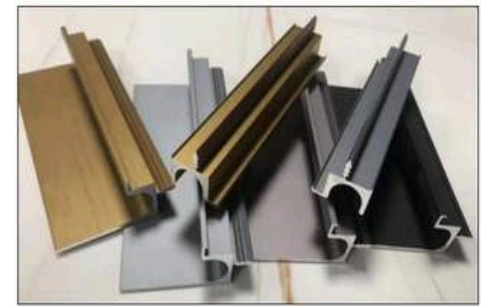
Wood grain transfer printing, oxidation, electrophoresis, powder spraying, fluorocarbon spraying, sandblasting. A variety of colors, and can do wood grain marble texture and so on. Because aluminum is oxidized to alumina in air, the chemical equation is: $Al + O_2 = Al_2O_3$. Alumina is stable, resistant to high temperature and humidity, and its chemical properties are determined at room temperature. Aluminum can form an oxide film (alumina) that prevents metal corrosion in moist air, an all-aluminum furniture plate. The oxide film can organize aluminum further into the deep layer. Oxidation is a protective film, so aluminum is not easy to rust and has strong antioxidant capacity.



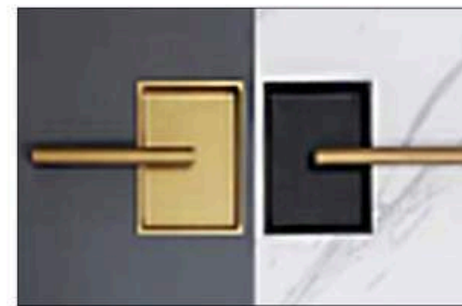
ADORN

CUSTOM JOINERY

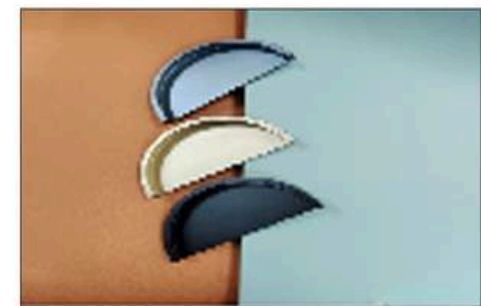
HANDLES



Built-in handle



Built-in handle



Built-in handle

HANGING RAILS



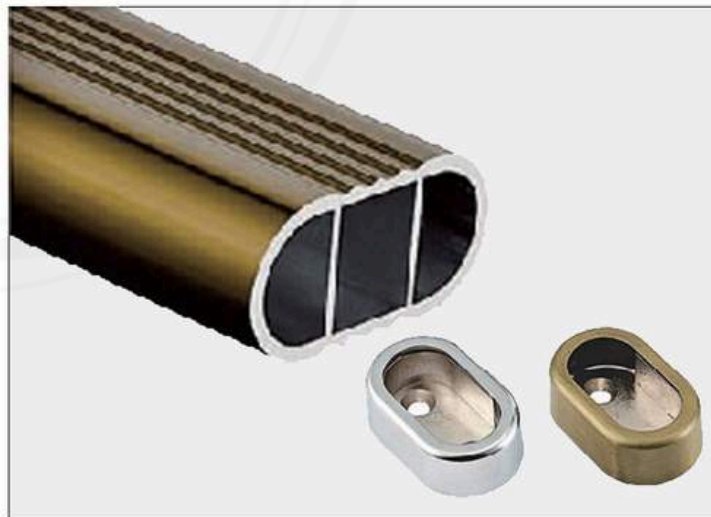
Black, rounded edge



Black, Square edge



Brushed Nickel



Brushed Gold

INNOVATIVE WARDROBE SOLUTIONS WITH OUR HONEYCOMB ALUMINUM

Eco-Friendly, Versatile, and Stylish Material for Modern Wardrobe Designs

Honeycomb aluminum is an ideal material for wardrobe design, offering unmatched versatility and environmental benefits. Its lightweight yet robust structure makes it perfect for constructing all-aluminum wardrobe frames, doors, and panels.

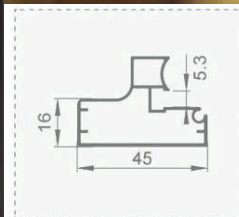
For the eco-conscious modern wardrobe industry, aluminum honeycomb panels stand out as an exceptional choice. They are entirely non-toxic and boast a green, eco-friendly profile, aligning perfectly with sustainable manufacturing practices. This ensures that wardrobe manufacturers can meet high environmental standards while simplifying production processes.

Moreover, aluminum honeycomb panels can be customized to mimic the appearance of wood, aluminum plates, gypsum boards, and natural marble stone. This flexibility allows for a diverse range of design options, making it easy to select the perfect material for any wardrobe style.



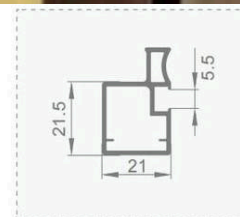


GLASS DOOR PROFILES



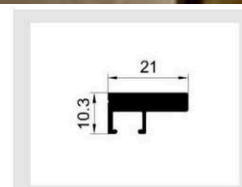
Model:JJ-1773

Wall thickness:1.2mm



Model:JJ-1774

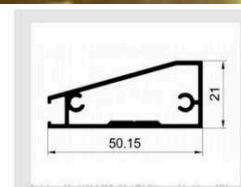
Wall thickness:1.4mm



Name:JJ-2018(Boloni upper and lower frame)

Weight:0.309kg/m

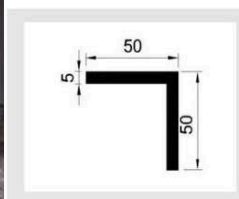
Wall thickness:4.7mm



Name:JJ-2019(Boloni frame)

Weight:0.591kg/m

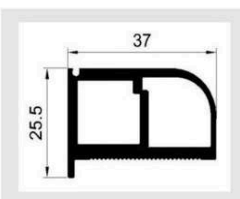
Wall thickness:1.3mm



Name:JJ-2038(Foot line angle code)

Weight:2.2kg/m

Wall thickness:5.0mm



Name:JJ-2010(Hidden edge embedded handle)

Weight:0.81kg/m

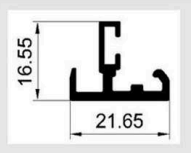
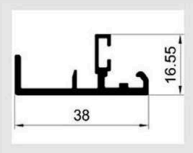
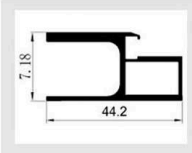
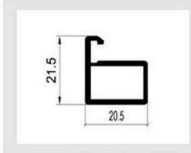
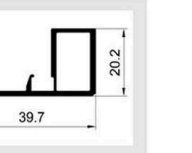
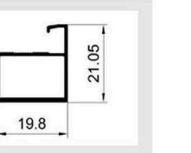
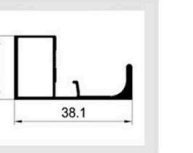
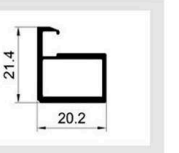
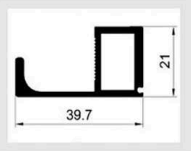
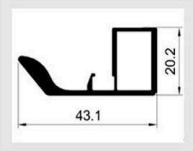
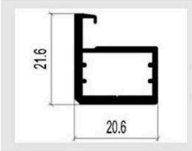
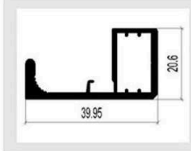
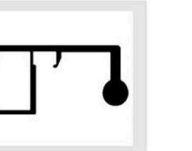
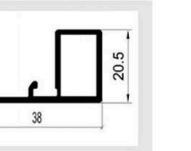
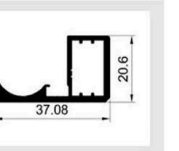
Wall thickness:2.8mm

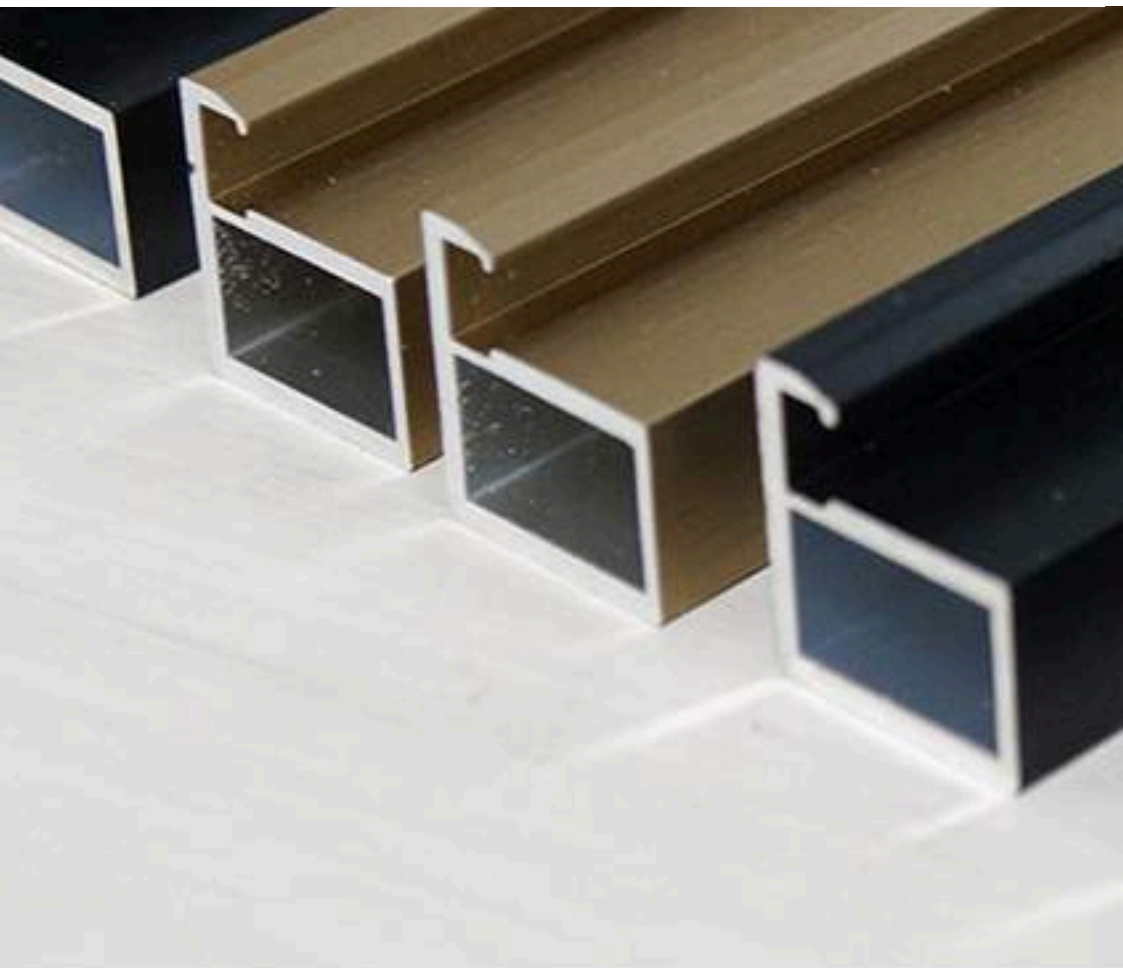


Name:Hidden edge embedded handle

Wall thickness:2.8mm

Stock color: Matte black, Brushed gold

							
Name:JJ-1998(Hole-free frame)	Name:JJ-1999(Hole-free handle)	Name:JJ-2000(U-shaped handle)	Name:JJ-2015(20 frame border)	Name:JJ-2006(20 Subrack F handle)	Name:JJ-2007(20 frame border)	Name:JJ-2017(20 frame handle)	Name:JJ-2009(20 frame border)
Weight:0.246kg/m	Weight:0.370kg/m	Weight:0.617kg/m	Weight:0.333kg/m	Weight:0.46kg/m	Weight:	Weight:	Weight:0.32kg/m
Wall thickness:1.8mm	Wall thickness:1.75mm	Wall thickness:1.8mm	Wall thickness:1.6mm	Wall thickness:1.8mm	Wall thickness:1.4mm	Wall thickness:1.4mm	Wall thickness:1.8mm
							
Name:JJ-2002(F type hidden frame border)	Name:JJ-2003(Thumb pull)	Name:JJ-2016(20 frame border)	Name:JJ-2017(20 frame handle)	Name:JJ-2011(20 frame hollow handle)	Name:JJ-2012(Olecranon handle)	Name:JJ-2013(Seahorse pull)	Name:JJ-2014(Crescent one hand pull)
Weight:0.554kg/m	Weight:0.502kg/m	Weight:0.353kg/m	Weight:0.542kg/m	Weight:0.601kg/m	Weight:0.502kg/m	Weight:0.52kg/m	Weight:0.492kg/m
Wall thickness:2.7mm	Wall thickness:1.8mm	Wall thickness:2.1mm	Wall thickness:2.1mm	Wall thickness:1.8mm	Wall thickness:1.8mm	Wall thickness:2.1mm	Wall thickness:2.1mm



GLASS FINGERPULL

Select from one of our
multiple fingerpull ranges for
the glass door range

